

PERFORMANCE

Processor

Intel® Core™ i7-1185G7 (4C / 8T, 1.8 / 4.4GHz, 12MB)

Graphics

Integrated Intel Iris® Xe Graphics

Chipset

Intel SoC Platform

Memory

16GB Soldered LPDDR4x-4266

Memory Slots

Memory soldered to systemboard, no slots

Max Memory

16GB soldered memory, not upgradable

Storage

1TB SSD M.2 2280 PCIe 3.0 NVMe

Storage Support

One drive, up to 1TB M.2 2280 SSD

Card Reader

None

Optical

None

Audio Chip

High Definition (HD) Audio, Realtek® ALC3306 codec

Speakers

Stereo speakers, 2W x4 (2x woofers, 2x tweeters), Dolby® Atmos®

Camera

720p

Microphone

2x, Array

Battery

Integrated 60Wh

Max Battery Life

MobileMark® 2014: 17 hr (FHD)

Power Adapter

65W USB-C

DESIGN

Display

14" FHD (1920x1080) IPS 400nits Glossy, Glass, 72% NTSC, Dolby Vision™

Touchscreen

10-point Multi-touch

Keyboard

Backlit, Bulgarian

Case Color

Shadow Black

Surface Treatment

Leather

Case Material

Aluminium + leather (Top), Aluminium (Bottom)

Pen

Lenovo® Integrated Pen

Dimensions (WxDxH)

319.5 x 216.7 x 15.3-16.5mm (12.57 x 8.53 x 0.60-0.64 inches)

Weight

1.44 kg (3.17 lbs)

SOFTWARE

Operating System

Windows® 10 Home 64, English

Bundled Software

Office Trial

CONNECTIVITY

Ethernet

None

WLAN + Bluetooth™

11ax, 2x2 + BT5.1

WWAN

None

NFC

None

Standard Ports

- 1x USB 3.2 Gen 2 (Always On)
- 2x USB-C 3.2 Gen 2 / Thunderbolt™ 4 (support data transfer, Power Delivery 3.0, DisplayPort™ 1.4 and Always On)
- 1x headphone / microphone combo jack (3.5mm)

Monitor Cable

None

SECURITY & PRIVACY

Fingerprint Reader

Touch Style (Ultrasonic)

Other Security

Camera privacy shutter

SERVICE

Base Warranty

2-year, Depot

Included Upgrade

None

ACCESSORIES

Bundled Accessories

None

CERTIFICATIONS

Green Certifications

- ENERGY STAR® 8.0
- ErP Lot 3
- RoHS

Other Certifications

Intel® Evo Platform

MODEL

TopSeller : Yes

Announce Date : 2020-08-20

EAN / UPC / JAN : 195348723619

End of Support : 2026-11-09



Premium Care - Advanced Support from Real People. Real Fast.



REAL PERSON

Choose how you want to reach us - through the phone, chat or email - our expert technicians will take care of you.



REAL FAST

Highly trained technicians will provide you real-time solutions, whatever the issue, on your first contact. If needed, our team will schedule an onsite visit for the next business day.



HASSLE FREE

Getting started' and 'how-to' assistance for hardware and software. Easy solutions that are simple to reach - that's how Premium Care delivers you the ideal support experience.



PC HEALTH CHECK

Free annual PC Health Check that allows our experts to spot issues before you do so they can resolve them quickly and help you avoid PC problems.

Accidental Damage Protection - Protection of your PC from the unexpected.

Experience shows that a significant portion of devices may be damaged (and not covered under warranty) in the first three years. Lenovo's Accidental Damage Protection service covers accidents beyond the system warranty such as drops, spills, bumps and even electrical surges. Make sure your new device has maximum protection, avoid unplanned costs and get peace of mind.

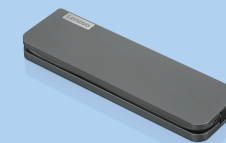
Base Warranty – Included with the systems you purchase, default 1- or 3-year coverage window.

Warranty Extensions & Upgrades – Service and protection that's right for your circumstances.

- Pick Up & Return Courier
- Onsite Support
- Technician Installed Customer
- Replaceable Unit Service
- International Warranty Upgrade

Lenovo may not offer the products, services or features discussed in this document in all regions. Lenovo may withdraw an offering at any time. Consult your local representative for information on offerings available in your area. Lenovo reserves the right to change specifications or other product information without notice. Lenovo is not responsible for photographic or typographical errors. Lenovo provides this publication "as is" without warranty of any kind, either express or implied, including the implied warranties of merchantability or fitness for a particular purpose.

Recommended Accessories



Lenovo USB-C Mini Dock_US

40AU0065US

Expand Your Potential with An Universal Mini Dock; Lenovo understands that modern business depends on a wide variety of PC's and even brands to meet their business needs. To make this easier Lenovo USB-C Mini dock is ...



Lenovo Thunderbolt 3 Essential Dock

4X90M60789

Lenovo understands that modern business depends on a wide variety of notebooks and devices from different brands working seamlessly together to meet business needs. To deliver this experience, Lenovo Thunderbolt 3 Ess...

For a full list of accessories and services, please visit:
<https://smartfind.Lenovo.com>

Lenovo

PSREF
Product Specifications
Reference