

## PERFORMANCE

### Processor

Intel® Core™ i3-1305U, 5C (1P + 4E) / 6T, P-core 1.6 / 4.5Ghz, E-core 1.2 / 3.3Ghz, 10MB

### Graphics

Integrated Intel UHD Graphics

### Chipset

Intel SoC Platform

### Memory

8GB Soldered LPDDR5-4800

### Memory Slots

Memory soldered to systemboard, no slots, single-channel (4GB or 8GB models)

### Max Memory

8GB soldered memory, not upgradable

### Storage

1TB SSD M.2 2242 PCIe® 4.0x4 NVMe®

### Storage Support<sup>[1]</sup>

One drive, up to 1TB M.2 2242 SSD

### Storage Slot

One M.2 PCIe 4.0 x4 slot (M.2 SSD models)

### Card Reader

SD Card Reader

### Optical

None

### Audio Chip

High Definition (HD) Audio

### Speakers

User-facing stereo speakers, 1.5W x2, optimized with Dolby® Audio™

### Camera

HD 720p with Privacy Shutter

### Microphone

2x, Array

### Battery

Integrated 47Wh

### Power Adapter

65W Round Tip (3-pin)

## DESIGN

### Display

15.6" FHD (1920x1080) TN 250nits Anti-glare

### Touchscreen

None

### Keyboard

Non-backlit, Bulgarian

### Case Color

Arctic Grey

### Surface Treatment

IMR (In-Mold Decoration by Roller)

### Case Material

PC-ABS (Top), PC-ABS (Bottom)

### Dimensions (WxDxH)<sup>[2]</sup>

359.3 x 235 x 17.9 mm (14.15 x 9.25 x 0.70 inches)

### Weight<sup>[3]</sup>

Starting at 1.62 kg (3.57 lbs)

## SOFTWARE

### Operating System

None

### Bundled Software

None

## CONNECTIVITY

### Ethernet

No Onboard Ethernet

### WLAN + Bluetooth<sup>[4]</sup>

11ac 2x2 + BT5.1

### Standard Ports

- 1x Card reader
- 1x HDMI® 1.4
- 1x Headphone / microphone combo jack (3.5mm)
- 1x Power connector
- 1x USB-C® 3.2 Gen 1 (support data transfer, Power Delivery and DisplayPort™ 1.2)
- 2x USB 3.2 Gen 1

## SECURITY & PRIVACY

### Security Chip

Firmware TPM 2.0 Enabled

### Fingerprint Reader

None

### Other Security

Camera privacy shutter

## SERVICE

### Base Warranty

2-year, Courier or Carry-in

### Included Upgrade

None

## ACCESSORIES

### Bundled Accessories

None

## CERTIFICATIONS

### Green Certifications

- ErP Lot 26
- ErP Lot 6
- RoHS compliant

### Other Certifications

TÜV Rheinland® Low Blue Light (Software Solution)

### Mil-Spec Test

MIL-STD-810H military test passed (21 test items)

## MODEL

**TopSeller** : Yes **Announce Date** : 2023-06-29

**EAN / UPC / JAN** : 197532194656 **End of Support** : 2029-04-21



Product image is a sample, it may not match the real color of this model  
Note:

[1] The storage capacity supported is based on the test results with current Lenovo storage offerings.

[2] The system dimensions may vary depending on configurations.

[3] The system weight is approximate and based on results in Lenovo lab, which varies depending on the source of component, variance of the distribution of each component, and manufacturing process. It may not be the exact weight for each specific model.

[4] Bluetooth 5.2 is hardware ready but may run at a lower version due to OS limitations.

· Lenovo reserves the right to change specifications without notice.

To see more note information, please link to <https://psref.lenovo.com/Detail/2216?M=82X7006SBM>

## Premium Care - Advanced Support from Real People. Real Fast.



### REAL PERSON

Choose how you want to reach us - through the phone, chat or email - our expert technicians will take care of you.



### REAL FAST

Highly trained technicians will provide you real-time solutions, whatever the issue, on your first contact. If needed, our team will schedule an onsite visit for the next business day.



### HASSLE FREE

'Getting started' and 'how-to' assistance for hardware and software. Easy solutions that are simple to reach - that's how Premium Care delivers you the ideal support experience.



### PC HEALTH CHECK

Free annual PC Health Check that allows our experts to spot issues before you do so they can resolve them quickly and help you avoid PC problems.

## Accidental Damage Protection - Protection of your PC from the unexpected.

Experience shows that a significant portion of devices may be damaged (and not covered under warranty) in the first three years. Lenovo's Accidental Damage Protection service covers accidents beyond the system warranty such as drops, spills, bumps and even electrical surges. Make sure your new device has maximum protection, avoid unplanned costs and get peace of mind.

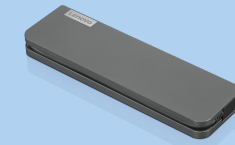
## Base Warranty – Included with the systems you purchase, default 1- or 3-year coverage window.

## Warranty Extensions & Upgrades – Service and protection that's right for your circumstances.

- Pick Up & Return Courier
- Onsite Support
- Technician Installed Customer
- Replaceable Unit Service
- International Warranty Upgrade

Lenovo may not offer the products, services or features discussed in this document in all regions. Lenovo may withdraw an offering at any time. Consult your local representative for information on offerings available in your area. Lenovo reserves the right to change specifications or other product information without notice. Lenovo is not responsible for photographic or typographical errors. Lenovo provides this publication "as is" without warranty of any kind, either express or implied, including the implied warranties of merchantability or fitness for a particular purpose.

## Recommended Accessories



### Lenovo USB-C Mini Dock\_US

40AU0065US

Expand Your Potential with An Universal Mini Dock; Lenovo understands that modern business depends on a wide variety of PC's and even brands to meet their business needs. To make this easier Lenovo USB-C Mini dock is ...



### Lenovo Professional Wireless Combo Keyboard & Mouse (US English)

4X30H56796

This sleek and stylish full-size keyboard and mouse combo offers exceptional quality in a modern wireless solution. The slim 3-zone keyboard with number pad has responsive quiet keys and a premium typing experience. O...

For a full list of accessories and services, please visit:  
<https://smartfind.Lenovo.com>

**Lenovo**

**PSREF**  
Product Specifications  
Reference