



Philips StraightCare
Sublime Ends Straightener

with SplitStop technology
for split ends prevention
2x Ionic Conditioning
Keratin infusion



BHS677/00

Put your hair in the spotlight

Up to 95% split-free ends*

Premium sublime ends straightener is our first straightener designed to protect your fragile ends. Thanks to our premier SplitStop Technology and floating plates you can enjoy beautifully styled hair with healthy looking ends!

Beautifully styled hair

- Keratin infusion for better care
- 2x stronger ionic conditioning for vibrant shine

Proven to prevent split ends

- SplitStop Technology for ultimate split ends prevention
- UniTemp sensor for beautifully styled hair with less heat
- Floating plates for gentle styling
- Advanced Ceramic for smooth gliding and damage prevention
- 14 digital temperature settings for absolute control

Ease of use

- Heat-resistant cap for safe immediate storage
- Extra Long plates (105mm) for fast and easy straightening
- Cool Tip to easily create curls and waves
- Fast heat up time, ready to use in 15 sec
- 2m power cord

PHILIPS

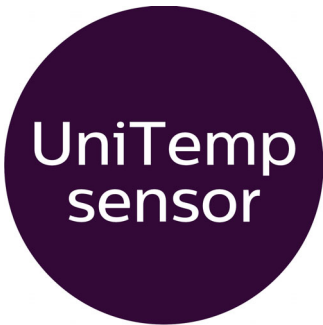
Highlights

SplitStop Technology



Our secret to ultimate split ends prevention is the new SplitStop Technology. It is a unique combination of UniTemp sensor and our advanced ceramic floating plates to respect the health of your hair. The UniTemp sensor protects your hair from being exposed to unnecessary high heat and our styling plates guarantee minimal friction for ultimate split ends protection.

UniTemp Sensor



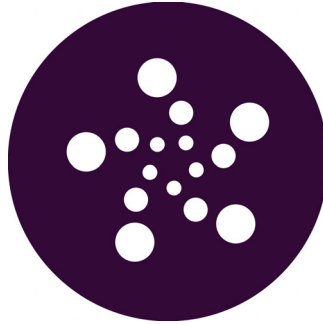
The UniTemp sensor protects your hair from being exposed to unnecessary high heat by providing a more consistent styling temperature for improved performance: Get the same results with a 20°C lower heat setting**. Create the perfect style with healthy-looking ends full of life.

Keratin infusion



Keratin is the hair's essential ingredient which makes them strong, healthy and gorgeous looking. The ceramic is enriched with keratin to even better take care of your hair.

Ionic Conditioning 2x stronger



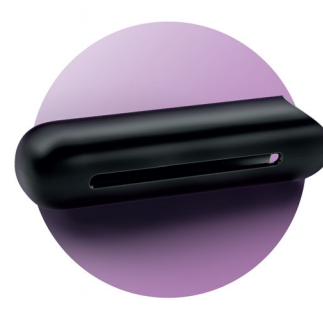
Charged negative ions eliminate static, condition the hair and smooth down the hair cuticles to intensify the hair's shine and glossiness. The result is smooth, frizz-free hair with vibrant shine. 2x stronger ionic conditioning comes from an advanced ionizer which releases two times more ions compared to a standard ionizer, enabling every strand of hair to be cared for from all angles.

Floating plates



The advanced ceramic floating plates move to adjust the pressure on the hair. This protects the hair shaft from being damaged and reduces the possibility of split ends.

Soft heat protection cap



The special soft heat protection cap has multiple benefits, the most important being that it is made of silicon-rubber, a heat-resistant material. After usage, slide the cap on your straightener to enable safe immediate storage. It will also protect your straightening plates from scratching as well as locking your straightener while stored.

105mm long plates



The straightening plates have a professional length of 105mm, leading to faster and easier straightening.

Specifications

Technical specifications

- Cord length: 1.8 m
- Heat-up time: 15 sec
- Heater Type: High-performance heater
- Maximum temperature: 230 °C
- Plate size: 25x105 mm
- Voltage: 110-240 V

Features

- Auto shut-off: After 30 minutes

- Ceramic coating
- Hanging loop
- Swivel cord

Caring technologies

- Ionic Care

Service

- Guarantee: 2 - Year Worldwide Guarantee



Issue date 2017-01-01

Version: 2.3.1

© 2017 Koninklijke Philips N.V.
All Rights reserved.

Specifications are subject to change without notice.
Trademarks are the property of Koninklijke Philips N.V.
or their respective owners.

www.philips.com

* after simulating 2 years of straightening usage at 200°C of average European, split-free hair
** hair temperature & consumer test compared with HP8344