

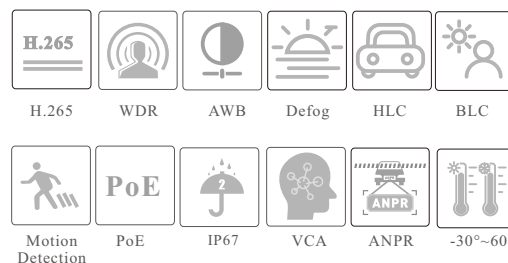
CAMERA

TD-9443A3BH-A-LR

4MP HD License Plate Recognition Bullet Network Camera



- 4MP (2688 × 1520) @30fps
- Support H265+/H264+/H265/H264/MJPEG coding
- ICR auto switch, true day/night
- Motorized lens
- 3D DNR, HWDR, HLC, BLC and ROI coding
- Built-in micro SD card slot, up to 256GB
- DC12V/AC24V/PoE power supply
- Support three streams
- IP67
- Support mobile surveillance by smart phones with iOS and Android OS
- Support license plate detection and recognition
- Support NAT function
- Support dual-system backup



en.tvt.net.cn

For more information, please visit our website

Shenzhen TVT DIGITAL TECHNOLOGY CO., LTD.

Address: 23rd Floor, Block B4, Building NO.9, Shenzhen Bay
Eco-Technology Park, Nanshan District, Shenzhen, Guangdong
Province, P.R.China

Tel: +86-755-36995888

Web site: <http://en.tvt.net.cn>

Fax: +86-755-33104777

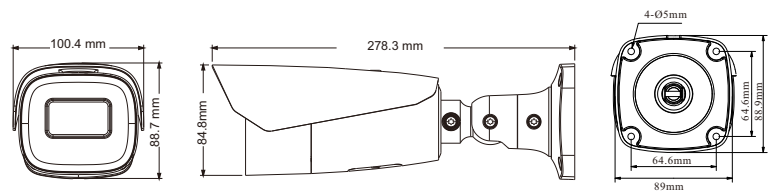
E-mail: overseas@tvt.net.cn

SPECIFICATIONS

Specifications	Model	TD-9443A3BH-A-LR
Camera		
Image Sensor	1 / 1.8" CMOS	
Image Size	2688 × 1520	
Electronic Shutter	Manual or auto; manual: 1 / 1 s ~ 1 / 10000s	
Iris Type	DC Iris	
Min. Illumination	0.001 lux@F1.6, AGC ON; 0 lux with iR	
Lens	2.8~12mm@F1.6, motorized	8~32mm@F1.6, motorized
Field of View	Horizontal: 100°~48.5°; Vertical: 54°~26.5°; Diagonal: 119°~55.8°	Horizontal: 42°~16°; Vertical: 24°~9°; Diagonal: 49°~18°
Lens Mount	Integrated	
Recommended ANPR Distance	3~8m	16~48m
Wide Dynamic Range	120dB	
BLC	Yes	
HLC	Yes	
Defog	Yes	
Digital NR	3D DNR	
S/N Ratio	≥50dB	
Angle Adjustment	Pan: 0°~360°; Tilt: 0°~90°; Rotation: 0°~360°	
Image		
Video Compression	Main stream: H.265+ / H.265 / H.264+ / H.264 Sub stream: H.265+ / H.265 / H.264+ / H.264 / MJPEG Third stream: H.265+ / H.265 / H.264+ / H.264 / MJPEG	
H.264 Compression Standard	Baseline Profile/Main Profile/High Profile	
Resolution	4MP (2688×1520), 2K (2560×1440), 3MP(2304×1296), 1080P(1920×1080), 720P (1280×720), D1, VGA(640×480), 640×360, 480×240, CIF	
Main Stream	4MP/2K/3MP/1080P(60Hz :1 ~ 30fps; 50Hz : 1 ~ 25fps) HFR Mode: 1080P(60Hz: 1~60fps; 50Hz: 1~50fps)	
Sub Stream	1080P (60Hz:1 ~ 15fps; 50Hz: 1 ~ 12fps) /720P/D1/VGA/640×360/480×240/CIF (60Hz:1 ~ 30fps; 50Hz: 1 ~ 25fps)	
Third Stream	D1/CIF (60Hz :1 ~ 30fps; 50Hz : 1 ~ 25fps)	
Bit Rate	64 Kbps ~ 8 Mbps	
Bit Rate Type	VBR / CBR	
Audio Compression	G711A / U	
Image Settings	ROI, Saturation, Brightness, Hue, Contrast, Wide Dynamic, Sharpness, Vertically flip, Horizontally flip, NR, etc. adjustable through client software or web browser	
ROI	Each ROI to be configured separately	
Interfaces		
Network	RJ 45 10M/100M self-adaptive Ethernet port	
Video Output	CVBS output (BNC× 1)	
Audio	1CH audio input; 1CH audio output	
Storage	Built-in micro SD card slot; up to 256GB	
Reset	Yes	
Alarm	1CH alarm input; 1CH alarm output	
RS 485	Yes	
Wiegand	Yes	
Functions		
Remote Monitoring	Web Browser/TVT NVMS2.0/NVR/mobile APP	
Web Browser	Chrome 105.0+/Edge 105.0+/Firefox 121.0+/Safari 14.0+	
Online Connection	Support simultaneous monitoring for up to 10 users; Support multi-stream real time transmission	
Network Protocol	UDP, IPv4, IPv6, DHCP, NTP, RTSP, RTP, RTMP, RTCP, PPPoE, DDNS, SMTP, FTP, SNMP, HTTP, HTTP POST, 802.1x, UPnP, HTTPS, NAT, QoS	
Interface Protocol	ONVIF Profile S/G/M/T	
API&SDK	Yes	
Storage	Network remote storage; micro SD card storage	
Smart Alarm	Motion detection, sensor alarm, SD card error, SD card full, IP address conflict, cable disconnection, audio alarm, video exception	
Security	Video encryption, firmware encryption, HTTPS encryption, configuration encryption, illegal login lock, IP address filtering, 802.1x authentication, basic and digest authentication for HTTP/RTSP/API	
General Function	Watermark, video mask, heartbeat, ANR, cloud upgrade, disarming	

PoE	Yes, IEEE802.3af	
IR Distance	50~70m	70~100m
Protection Grade	IP67	
License Plate Detection		
Snapshot	Original image (4MP resolution) and license plate image	
Vehicle Plate Database	10,000	
License Plate Detection & Recognition	Capture of vehicles with license plates and vehicles without license plate, Support plate exposure, travel direction recognition, plate character fault tolerance, plate comparison, snapshot time display Vehicle feature extraction: including vehicle color, plate color, vehicle type, vehicle brand/model, etc.	
Capture Speed Range	0~80km/h	0~120km/h
Entrance and Exit		
Barrier Gate Control Mode	Camera or Platform control	
Relay Output	1-ch relay output, supporting opening/closing/suspending of a barrier gate	
Screen Display	Support connecting a screen through RS485 interface to display captured license plates	
Plate Capture		
Capture Rate	In the recommended installation and lighting condition, the vehicle capture rate: ≥ 99%	
LPR Accuracy Rate	Entrance & Exit: ≥ 99%; Road: ≥ 98% (Under recommended installation and lighting condition)	
Others		
Power Supply	DC12V/AC24V/PoE	
Power Consumption	DC12V: < 12W; AC24V: <10W; PoE: <10W	
Operating Environment	- 30 °C ~ 60 °C (-22°F~140°F); Humidity: less than 95 % (non-condensing)	
Storage Environment	- 30 °C ~ 65 °C (-22°F~149°F); Humidity: less than 95 % (non-condensing)	
Dimensions (mm)	278.3 × 100.4 × 88.7	
Weight (net)	Approx. 1.176KG	
Material	Aluminum alloy body	
Installation	Ceiling mounting; Wall mounting	
Certificate	CE, FCC	
Environmental Protection	Complies with Directive EU RoHS, WEEE(2012/19/EU), directive 94/62/EC and REACH(EC1907/2006)	

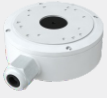
DIMENSIONS



AVAILABLE MODEL

Available Model	TD-9443A3BH-A-LR(D/AZ/PE/AR5)	2.8 ~ 12mm, motorized
	TD-9443A3BH-A-LR(D/AZ/PE/AR7)	8 ~ 32mm, motorized

AVAILABLE ACCESSORIES



TD-YXH0302



TD-YXH0302+
TD-YZJ0811



TD-YXH0302+
TD-YZJ0501



TD-YXH0302+
TD-YZJ0601