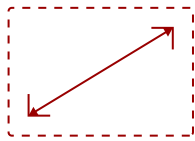


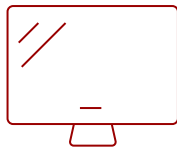
VG2240

## Key Features

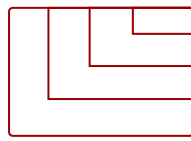
The ViewSonic® VG2240 is a 22" (21.5" viewable) Full HD monitor that includes a full-range of connectivity and ergonomic functionality ideal for your workstation at the office and at home. With SuperClear® MVA panel technology for wide-angle viewing, and a true 8-bit panel with the ability to reproduce 16.7M colors, this monitor delivers incredibly sharp images. Integrated with HDMI, DisplayPort, VGA and 4 USB ports, the VG2240 allows flexible connection to PC systems, laptops and other peripheral devices and accessories. ViewSonic's exclusive vDisplayManager software provides intuitive presets that deliver optimized screen performance in different applications. In addition, Flicker-Free and Blue Light Filter technology help to eliminate eye strain from extended viewing periods.



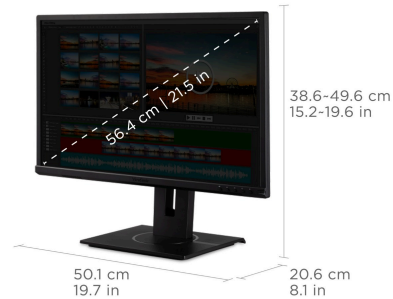
**22  
DISPLAY**



**MVA  
PANEL**



**1920 x 1080  
RESOLUTION**



**FULL HD (1920 x 1080P)  
Resolution**

## Product Description

The ViewSonic® VG2240 is a 22" (21.5" viewable) Full HD monitor that includes a full-range of connectivity and ergonomic functionality ideal for your workstation at the office and at home. With SuperClear® MVA panel technology for wide-angle viewing, and a true 8-bit panel with the ability to reproduce 16.7M colors, this monitor delivers incredibly sharp images. Integrated with HDMI, DisplayPort, VGA and 4 USB ports, the VG2240 allows flexible connection to PC systems, laptops and other peripheral devices and accessories. ViewSonic's exclusive vDisplayManager software provides intuitive presets that deliver optimized screen performance in different applications. In addition, Flicker-Free and Blue Light Filter technology help to eliminate eye strain from extended viewing periods.

## Specifications

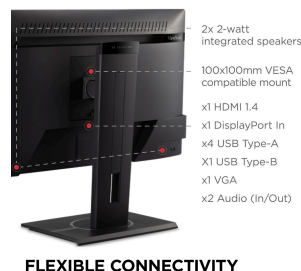
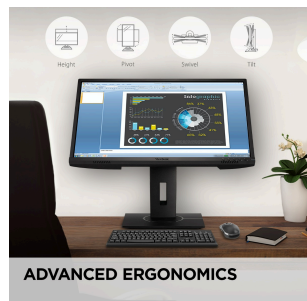
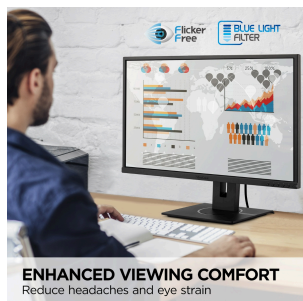
More Information

**Display Size (in.)**

22

<b>Viewable Area (in.)</b>	21.5
<b>Panel Type</b>	MVA
<b>Resolution</b>	1920 x 1080
<b>Resolution Type</b>	Full HD (1920x1080)
<b>Static Contrast Ratio</b>	3,000:1
<b>Dynamic Contrast Ratio</b>	80M:1
<b>Light Source</b>	LED
<b>Brightness</b>	250 cd/m2
<b>Colors</b>	16.7M
<b>Color Space Support</b>	8 bit true
<b>Aspect Ratio</b>	16:9
<b>Response Time (Typical GTG)</b>	5ms
<b>Viewing Angles</b>	178° horizontal, 178° vertical
<b>Backlight Life (Hours)</b>	30,000
<b>Panel Surface</b>	Anti-Glare type, Hard-coating (3H), Haze 25%
<b>Flicker-Free</b>	Yes
<b>Blue Light Filter</b>	Yes
<b>PC Resolution (max)</b>	1920 x 1080
<b>Mac® Resolution (max)</b>	1920 x 1080
<b>USB Type A</b>	4
<b>USB Type B</b>	1
<b>3.5mm Audio In</b>	1
<b>3.5mm Audio Out</b>	1
<b>VGA</b>	1
<b>HDMI 1.4 In</b>	1
<b>DisplayPort</b>	1
<b>Internal Speakers</b>	2W (x2)
<b>Eco Mode (Conserve)</b>	16.8
<b>Eco Mode (optimized)</b>	18.8
<b>Consumption (typical)</b>	21.6
<b>Consumption (max)</b>	57.8
<b>Voltage</b>	AC 100-240V (universal), 50-60Hz
<b>Stand-by</b>	0.5
<b>Power Supply</b>	Internal
<b>Cable Organization</b>	No
<b>Headphone Hook</b>	No

<b>Physical Controls</b>	Key 1 (eye), Key 2, Key 3, Key 4, Key 5, Key 6 (power)
<b>On Screen Display</b>	Input Select, Audio Adjust, ViewMode, Color Adjust, Manual Image Adjust, Setup Menu
<b>Temperature</b>	32-104° F (0 - 40° C)
<b>Humidity (non-condensing)</b>	20-90%
<b>VESA Compatible</b>	100 x 100 mm
<b>Frequency Horizontal</b>	VGA: 24 ~ 82 KHz   HDMI: 24 ~ 82 KHz   DP: 24 ~ 82 KHz
<b>Frequency Vertical</b>	VGA: 50 ~ 75 Hz   HDMI: 50 ~ 75 Hz   DP: 50 ~ 75 Hz
<b>Height Adjust</b>	130 mm / 5.1 in
<b>Swivel</b>	60°
<b>Pivot (Right/Left)</b>	90° / 90°
<b>Tilt (Forward/Back)</b>	5° / 40°
<b>Net (lbs)</b>	11.5
<b>Net Without Stand (lbs)</b>	6.2
<b>Gross (lbs)</b>	16.8
<b>Net (kg)</b>	5.2
<b>Net Without Stand (kg)</b>	2.8
<b>Gross (kg)</b>	7.6
<b>Packaging (in.)</b>	21.9 " (W) x 14.9 " (H) x 8.3 " (D)
<b>Physical (in.)</b>	19.7 " (W) x 15.23~19.56 " (H) x 8.1 " (D)
<b>Physical Without Stand (in.)</b>	19.7 " (W) x 11.6 " (H) x 2 " (D)
<b>Packaging (mm)</b>	556 mm (W) x 379 mm (H) x 210 mm (D)
<b>Physical (mm)</b>	501 mm (W) x 386.85~496.96 mm (H) x 206 mm (D)
<b>Physical Without Stand (mm)</b>	501 mm (W) x 294 mm (H) x 51 mm (D)
<b>Regulations</b>	cTUVus, FCC-B, ICES003, Energy Star 8.0, EPEAT Silver, CEC, NOM, Mexico Energy
<b>PACKAGE CONTENTS</b>	LCD Display, Power Cable, HDMI Cable, USB A/B Cable, Audio Cable, Quick Start Guide
<b>Recycle/Disposal</b>	Please dispose of in accordance with local, state or federal laws.
<b>Warranty</b>	Three-year limited warranty on parts, labor and backlight



**Contact Sales**  
[ViewSonic.com](http://ViewSonic.com)  
 888.881.8781  
 email:  
[salesinfo@viewsonic.com](mailto:salesinfo@viewsonic.com)