

DESIGN

Display Size

27"

View Area

596.7 x 335.7 mm (23.49 x 13.22 inches)

Panel

In-Plane Switching (IPS)

Aspect Ratio

16:9

Resolution

2560x1440

Pixel Pitch

0.2331 x 0.2331 mm

Dot / Pixel Per Inch

109 dpi

View Angle (H / V)

178 / 178

Pixel Response Time

4 ms (Extreme mode) / 6 ms (Typical mode) / 14 ms (off mode)

Contrast Ratio

1000:1

Color Gamut

99% sRGB

Brightness

350 nits

Anti Reflective

Anti-glare

Stand

Tilt, Swivel, Pivot, Height Adjust Stand

Color

Black

Side Bezel Width

2 mm

Dimensions with Stand (HxWxD)

614 x 329 x 554.25 mm (24.17 x 12.95 x 21.82 inches)

Weight (Including Stand)

7.95 kg (17.53 lbs)

Touchscreen

Non-touch

Buttons

- Volume button
- Exit button
- Brightness button
- Mode-switching button
- Power button
- Menu button

Mounting

Supports VESA mount (100mm)

Compatible Tiny

ThinkCentre® Tiny, ThinkCentre Nano, and ThinkStation Tiny

PERFORMANCE

Camera

RGBIR camera

Speaker

Stereo speakers, 2W x2

Microphone

Dual array microphone

Power Adapter

170W 88% Adapter

CPU / Platform

None / None

Display Ram / Storage / Card Slot

None / None / None

CONNECTIVITY

Rear Ports

- 1x HDMI®-in
- 1x power connector
- 1x USB upstream port
- 1x DisplayPort™

Left Ports

- 2x USB 3.1 Gen 1 (on TIO)
- Side ports offered by installed Tiny (on Tiny)
- 1x headphone / microphone combo jack (on TIO)

USB Port

2 x USB3.1 Gen1 (only available when a Tiny is installed or a PC is connected)

Multiple Input

DP, HDMI

Wireless / Ethernet / Bluetooth™

None / None / None

Monitor Cable

Undetachable 3-in-1 cable (Power connector, USB [supports USB 3.1 Gen1 / USB 2.0], DisplayPort)

In the Box

- TIO 27 (Monitor)
- Power Adapter
- Detachable Stand
- Power Cord
- Reference and Driver CD

SECURITY & PRIVACY

Physical Locks

Kensington® Security Slot

SERVICE

Base Warranty

3-year

CERTIFICATIONS

ENERGY STAR®

Yes

TCO

TCO8.0

EPEAT™

Silver

Low Blue Light / Eye Comfort / Eyesafe Display

Eye Comfort

Green Certifications

- WEEE
- VOC
- ENERGY STAR 8.0
- EPEAT Silver
- TUV
- RoHS compliant
- ULE Gold
- TCO edge 2.0

Other Certifications

- ISO 9241-307
- TÜV Eye comfort certified

SOFTWARE

Operating System Support

Support Windows® 7, Windows 10

MODEL

Announce Date : 2020-03-20

EAN / UPC / JAN

: 0195042227864

The product image is a sample, it may not match the real color of this model

For a full list of this model's configurations and device specifications, please visit: <https://psref.Lenovo.com>

Premier Support - A direct 24x7x365 line to our most elite technicians.



Advanced technical support, 24x7x365, in more than 100 markets



Technical Account Managers for proactive relationship and escalation management



Comprehensive hardware & OEM software support



Priority on service delivery and repair parts



Single point of contact for simplified end-to-end case management



Lenovo Service Connect Portal for customized reporting and product support

Accidental Damage Protection - Protection of your PC from the unexpected.

Experience shows that a significant portion of devices may be damaged (and not covered under warranty) in the first three years. Lenovo's Accidental Damage Protection service covers accidents beyond the system warranty such as drops, spills, bumps and even electrical surges. Make sure your new device has maximum protection, avoid unplanned costs and get peace of mind.

Base Warranty - Included with the systems you purchase, default 1- or 3-year coverage window.

Warranty Extensions & Upgrades - Service and protection that's right for your circumstances.

- Pick Up & Return Courier
- Onsite Support
- Technician Installed Customer
- Replaceable Unit Service
- International Warranty Upgrade

Lenovo may not offer the products, services or features discussed in this document in all regions. Lenovo may withdraw an offering at any time. Information is subject to change without notice. Consult your local representative for information on offerings available in your area. Lenovo reserves the right to change specifications or other product information without notice. Lenovo is not responsible for photographic or typographical errors. Lenovo provides this publication "as is" without warranty of any kind, either express or implied, including the implied warranties of merchantability or fitness for a particular purpose.

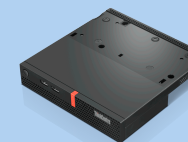
Recommended Accessories



ThinkCentre Tiny Sandwich Kit II

4XH0N04098

The ThinkCentre Tiny Sandwich Kit II is a mechanical bracket which can mount your ThinkCentre Tiny PC between monitor and ThinkCentre Extend Arm. The Tiny Sandwich kit enables more desktop and floor space while provid...



ThinkCentre Nano TIO Cube

4XF0V81632

The ThinkCentre Nano TIO Cube allows you to configure your own AIO PC using a Nano PC as the computing power. Simply connect your Nano PC to your TIO Cube and then slide them into a TIO monitor. This solution works wi...

For a full list of accessories and services, please visit:
<https://smartfind.Lenovo.com>

Lenovo

PSREF
Product Specifications
Reference